

# Seattle School District

## Enrollment and Demographic Trends

### District Forecast

Prepared by

William L. (“Les”) Kendrick Ph.D.

**Educational Data Solutions, LLC**

P.O. Box 9693

Seattle, WA 98109

**March 8, 2024**

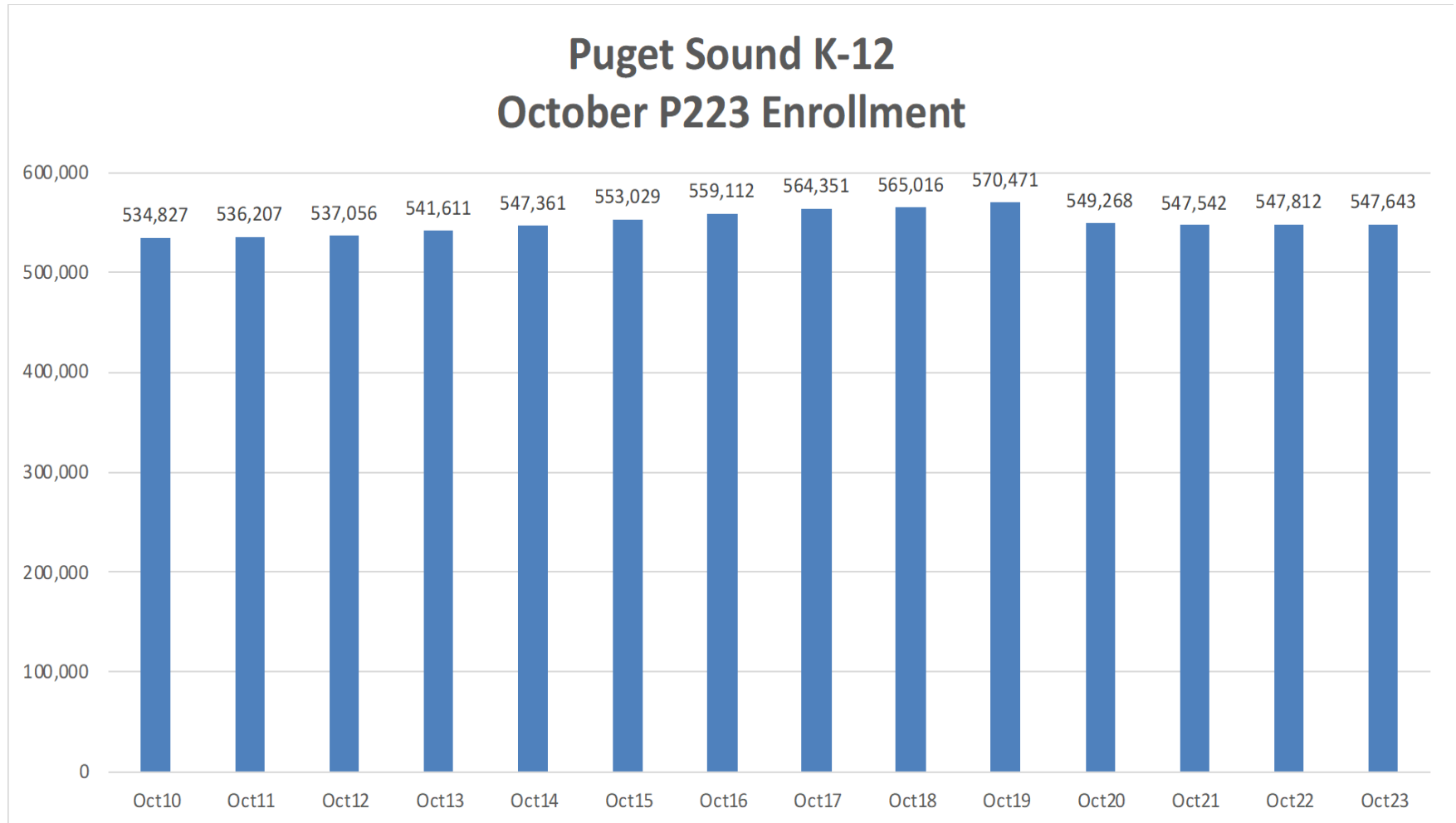


# Outline

- Post Covid Enrollment in King County and the Region
- Seattle School District Enrollment Trends
- Demographics and Enrollment
  - Population
  - Housing
  - Births
  - Migration
- Forecasts

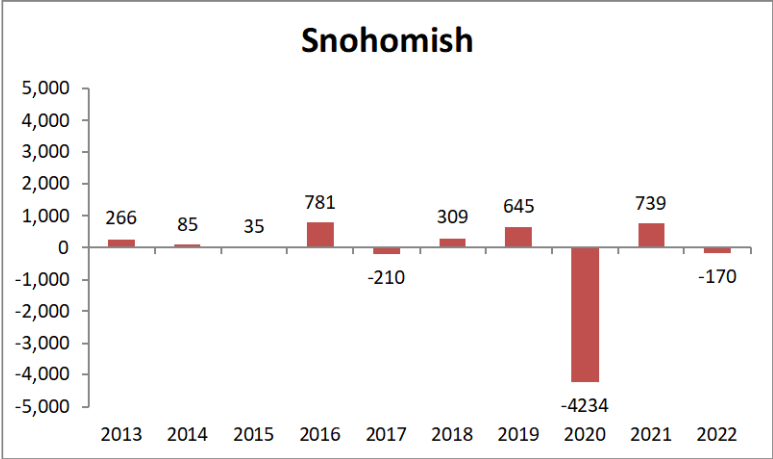
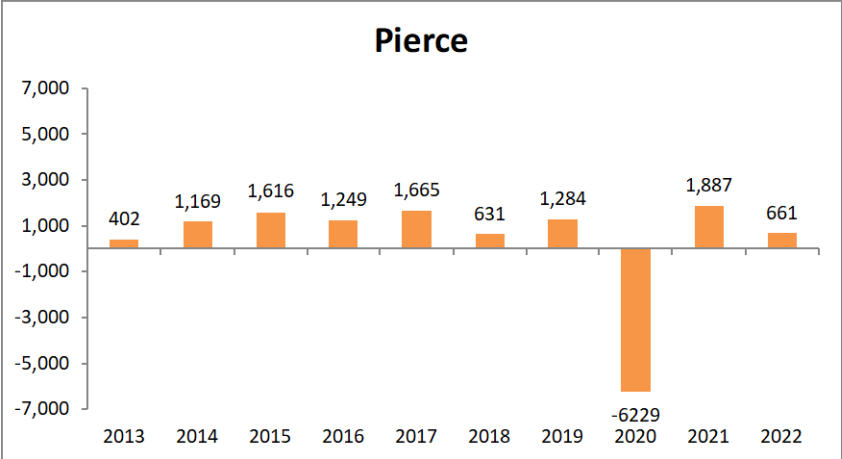
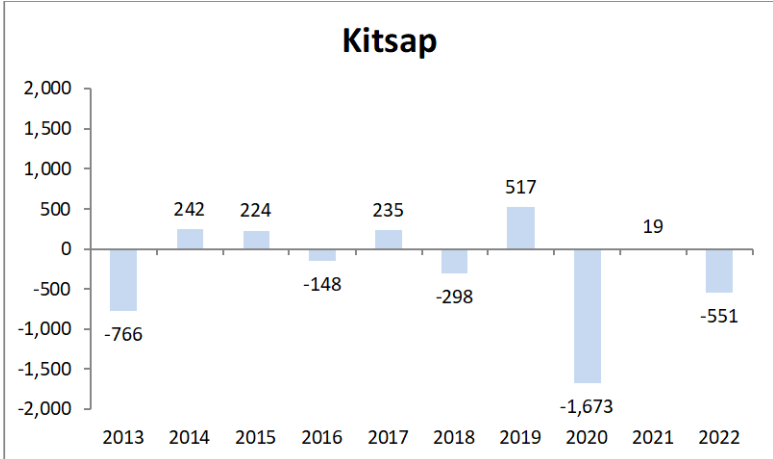
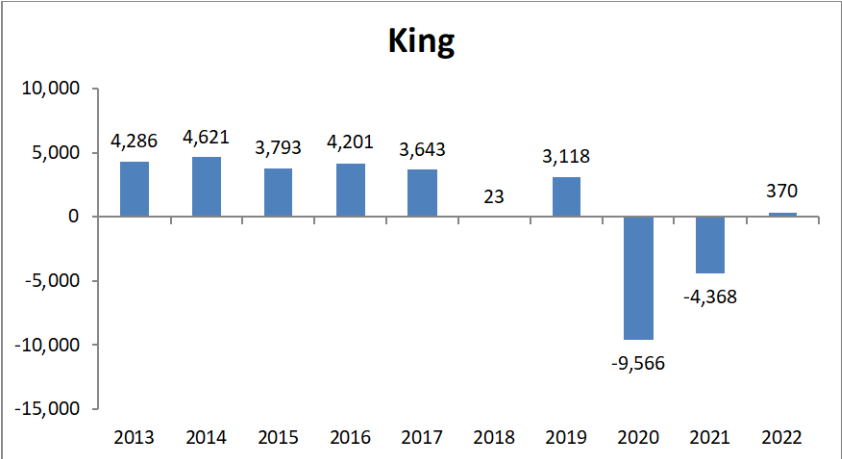
# Puget Sound Enrollment Trends (Four County Region)

*Enrollment in the four-county Puget Sound region is still about 23,000 students less than what it was prior to the pandemic.*



# Annual Net Change in Enrollment by County Since 2012

(Numbers may have changed since the original reporting date)



# King County Public School Districts P223

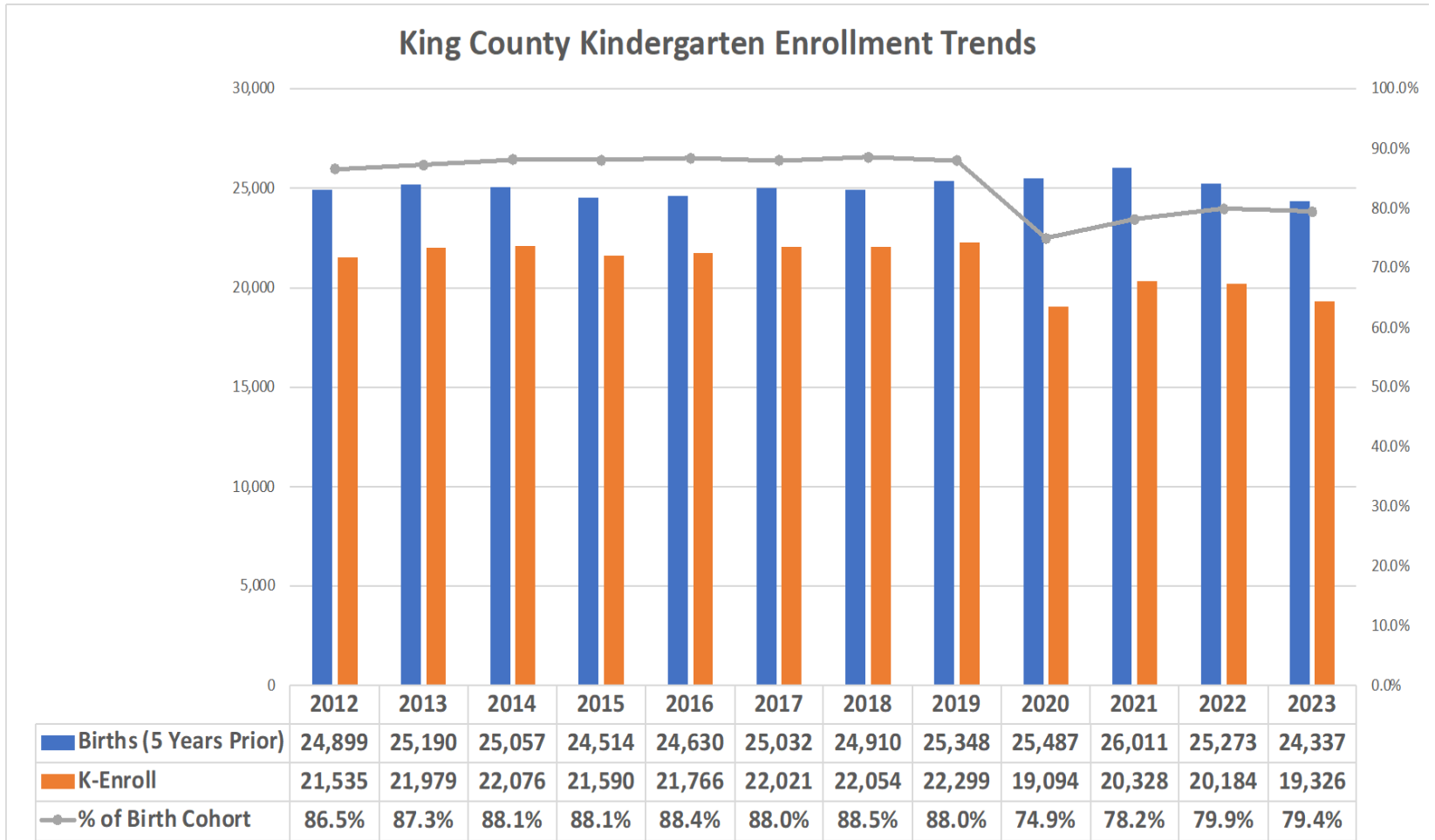
## Change in Enrollment: Oct 2019 to Oct 2023

Numbers may have changed since originally reported.

						Change Oct22	Change Oct19
<b>King County Districts</b>	<b><u>Oct 2019</u></b>	<b><u>Oct 2020</u></b>	<b><u>Oct 2021</u></b>	<b><u>Oct 2022</u></b>	<b><u>Oct 2023</u></b>	<b><u>to Oct23</u></b>	<b><u>to Oct23</u></b>
Auburn	16,906	16,194	16,601	17,061	17,239 *	178	333
Bellevue	20,323	19,496	18,750	18,353	18,769	416	-1,554
Enumclaw	4,104	3,951	4,046	4,236	4,309 *	73	205
Federal Way	21,624	20,609	20,175	20,436	20,552 *	116	-1,072
Highline	18,189	17,745	17,476	17,341	17,069	-272	-1,120
Issaquah	20,470	19,442	18,905	18,902	18,800 *	-102	-1,670
Kent	25,913	24,587	24,153	24,481	24,447	-34	-1,466
Lake Washington	31,106	30,648	30,553	30,423	30,605	182	-501
Mercer Island	4,387	4,125	4,007	4,012	3,932	-80	-455
Northshore	22,943	22,686	22,419	22,320	22,391	71	-552
Renton	15,176	14,922	14,595	14,387	14,128	-259	-1,048
Riverview	3,268	3,001	2,983	3,035	2,988	-47	-280
Seattle	53,628	52,383	50,192	50,065	49,230	-835	-4,398
Shoreline	9,604	9,271	9,078	9,150	9,128	-22	-476
Skykomish	51	48	38	35	42	7	-9
Snoqualmie	7,021	6,704	6,965	6,897	6,982	85	-39
Tahoma	8,846	8,415	8,621	8,831	8,874	43	28
Tukwila	2,758	2,650	2,529	2,511	2,624	113	-134
Vashon Island	1,469	1,439	1,465	1,475	1,434	-41	-35
LW Technical	204	175	166	165	154	-11	-50
Renton Technical	1	1	0	0	0	0	-1
<b>CHARTER SCHOOLS</b>					0	0	
Summit Atlas	344	453	479	458	545	87	201
Rainier Prep	350	346	327	334	335	1	-15
Summit Sierra	507	379	314	232	222	-10	-285
Rainier Valley Leadership Academy (Green Dot)	378	162	161	145	163	18	-215
Impact Salish Elementary		130	300	351	324	-27	324
Impact Public Schools	283	415	607	594	485	-109	202
Impact Black River Elementary	0	0	0	0	132	132	132
Ashe	90	0	0	0	0	0	-90
Why Not You Academy			104	149	186	37	186
<b>Total</b>	<b>289,943</b>	<b>280,377</b>	<b>276,009</b>	<b>276,379</b>	<b>276,089</b>	<b>-290</b>	<b>-13,854</b>
<b>Change</b>		<b>-9,566</b>	<b>-4,368</b>	<b>370</b>	<b>-290</b>		

# Kindergarten Enrollment Trends

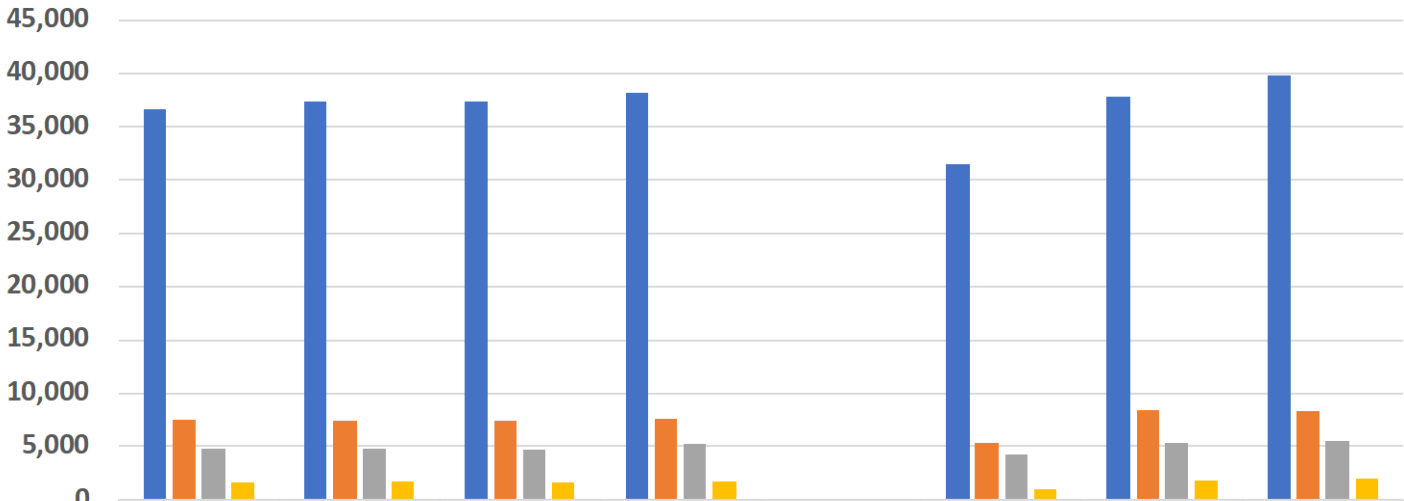
## *King County Public Schools*



# Private School Data

Note: Data not available for 2019

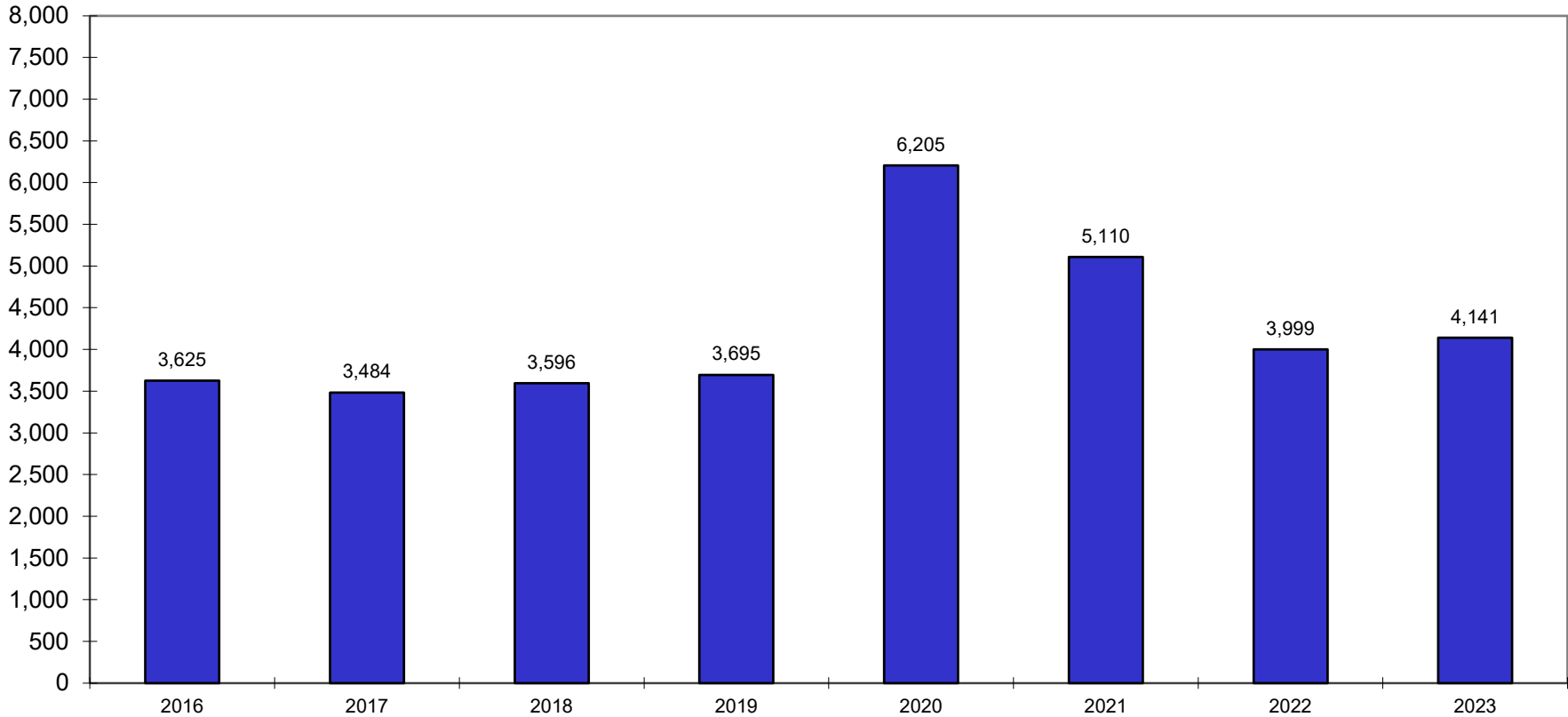
Private School Enrollment Data K-12 Only  
OSPI and Washington State Board of Education



	2015	2016	2017	2018	2019	2020	2021	2022
King County	36,606	37,395	37,314	38,224		31,511	37,890	39,886
Pierce County	7,509	7,431	7,388	7,698		5,449	8,489	8,330
Snohomish County	4,775	4,827	4,678	5,291		4,214	5,401	5,572
Kitsap County	1,664	1,706	1,647	1,714		1,091	1,821	2,019

# Home-Based Instruction

## King County Districts Combined OSPI Home-Based Instruction Reports





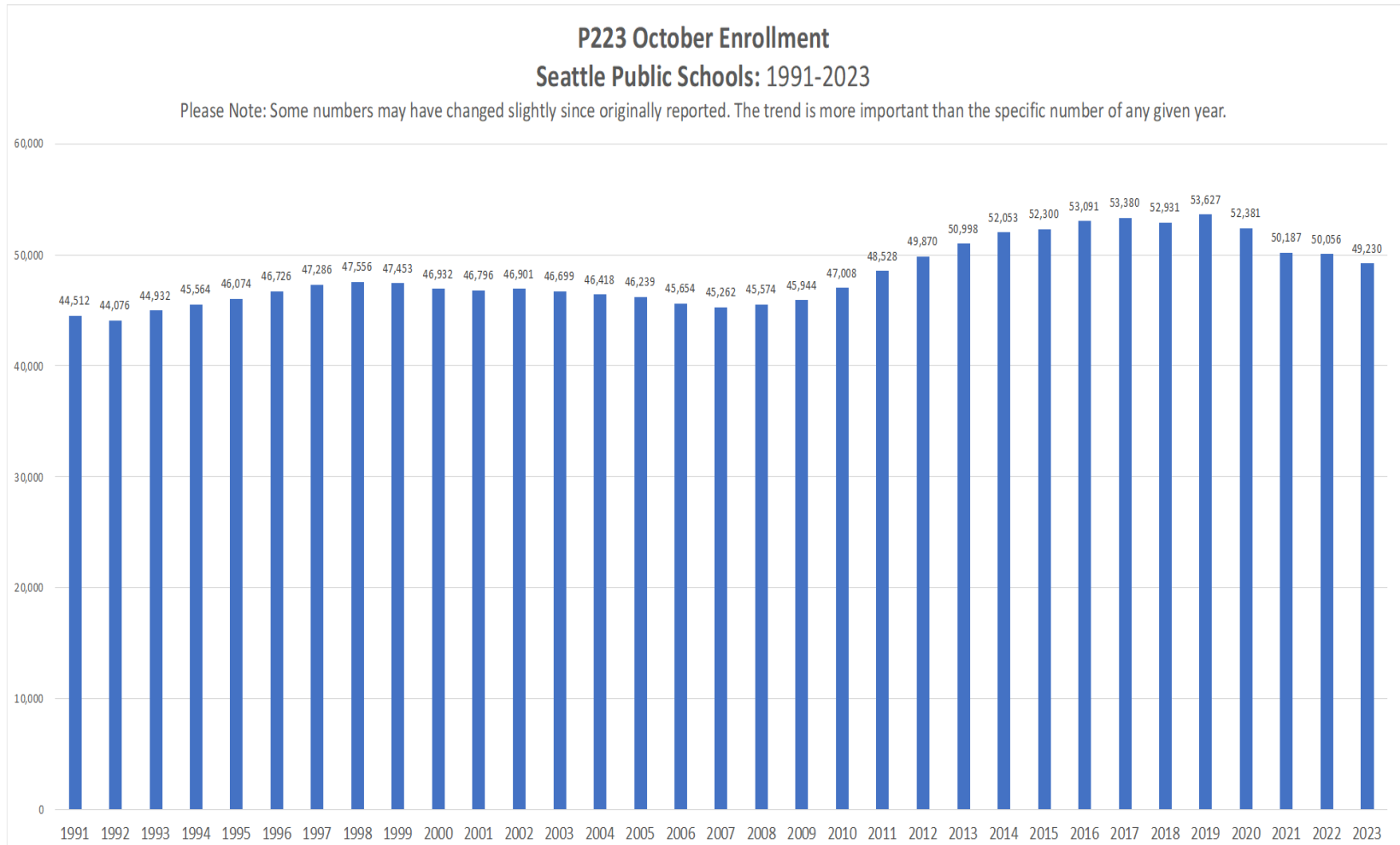
Focusing on Seattle

# District Enrollment Trend

P223 Enrollment (October)

Does Not Include Full-Time Running Start Students

Numbers may have changed since originally reported

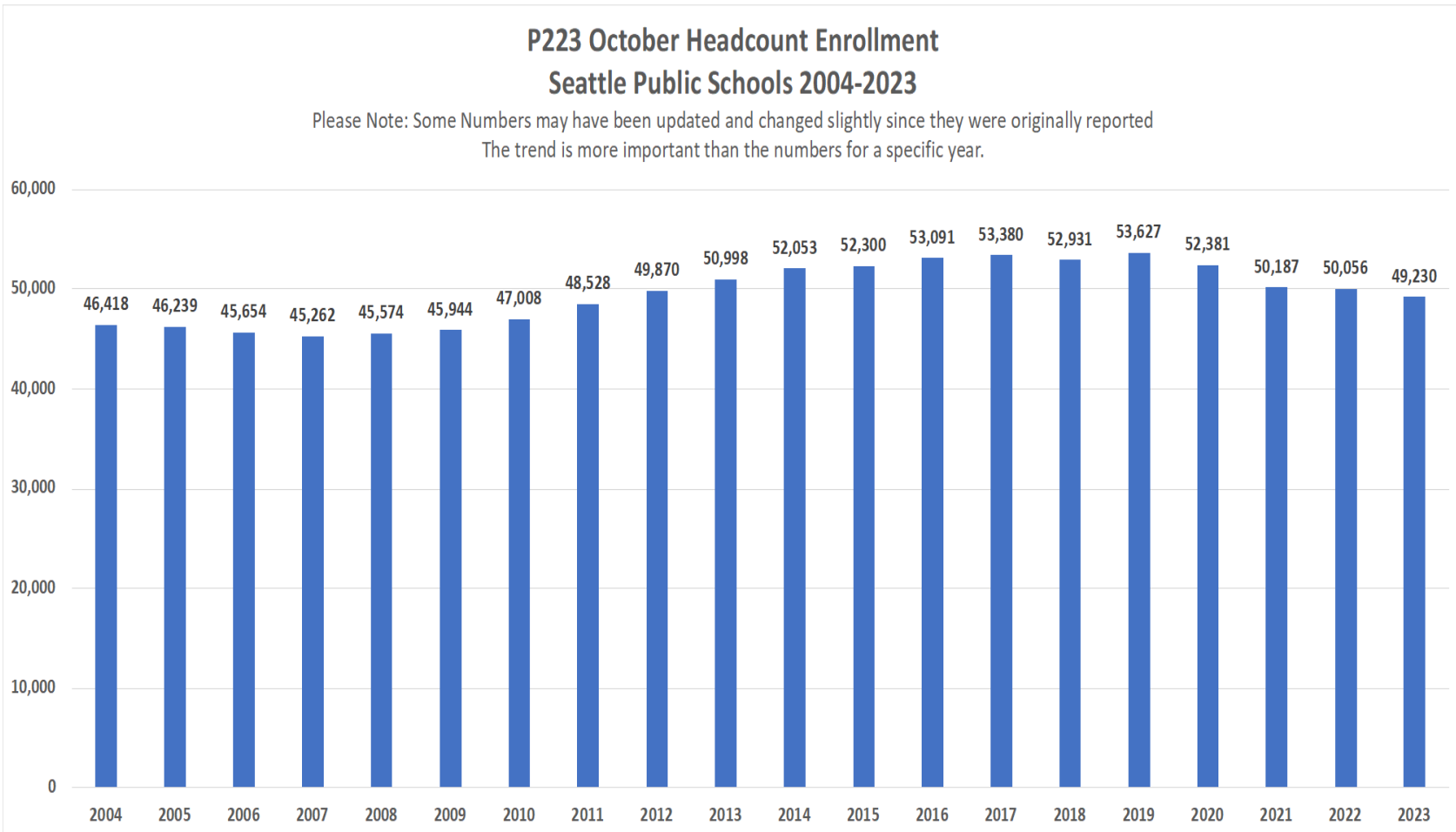


# District Enrollment Trend

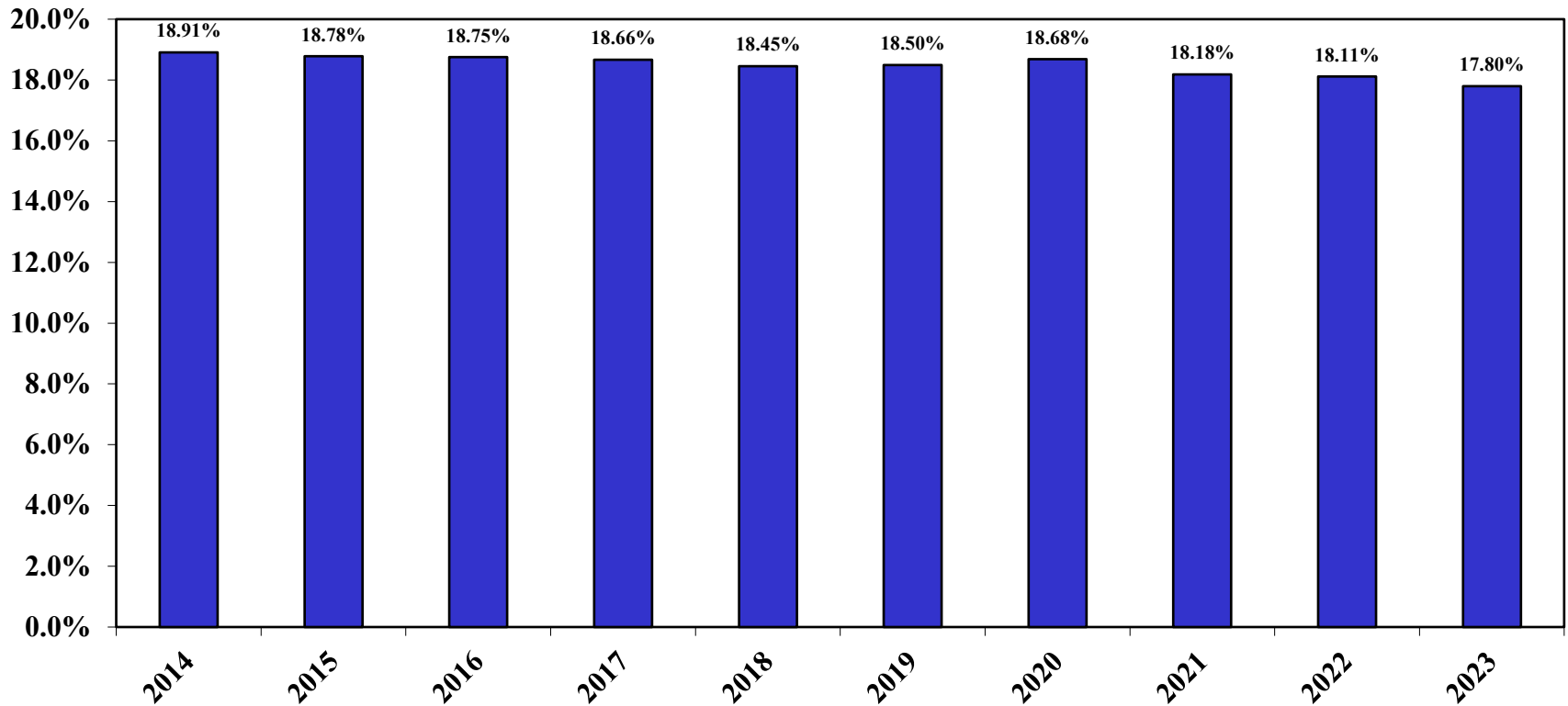
P223 Enrollment (October 2004-2023)

Does Not Include Full-Time Running Start Students

Numbers may have changed since originally reported



# Seattle's Share of County K-12 Public School Enrollment

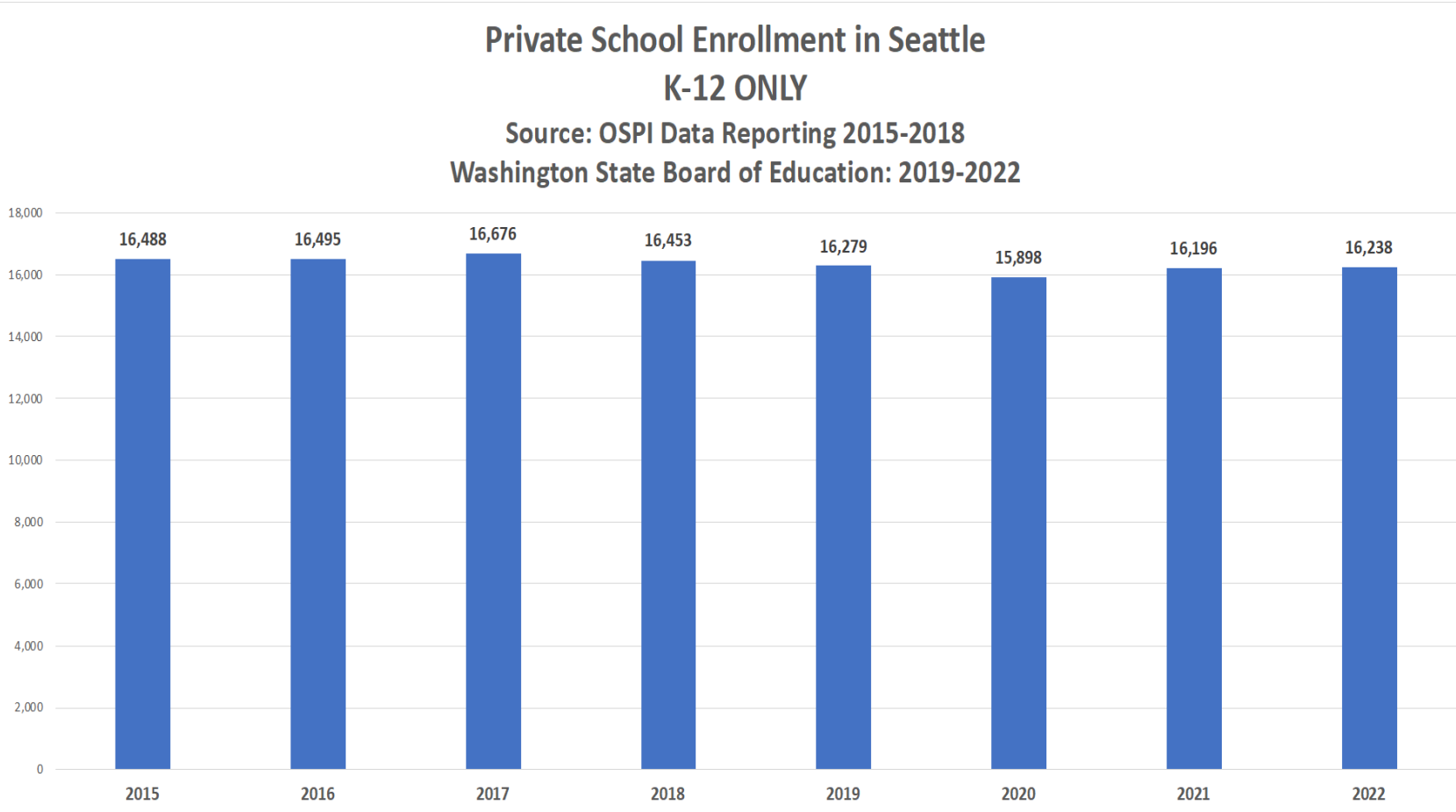


# Private School Enrollment

## Seattle Private Schools K-12 ONLY

### In the District Boundary Area

Washington State Board of Education and OSPI Reporting

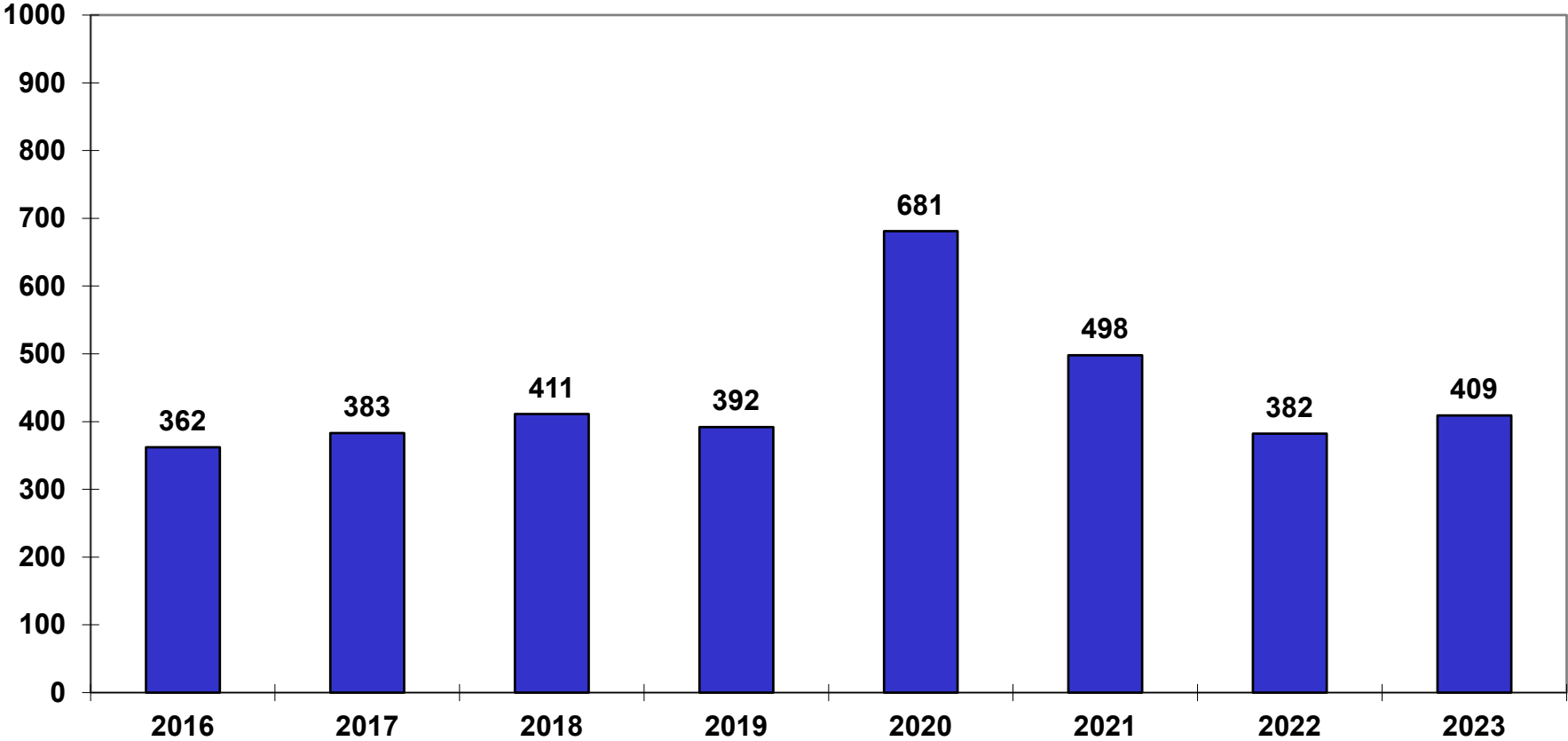


# Home-Based Instruction

## Seattle School District

### Not in the District Schools or Programs

#### OSPI Home-Based Instruction Reports



# Demographics and Enrollment

# Seattle School District Census Data

	Census			OFM Estim.	Forecast
	<u>2000</u>	<u>2010</u>	<u>2020</u>	<u>2023</u>	<u>2030</u>
<b>Population</b>	564,130	609,471	737,763	780,001	836,267
Change		45,341	128,292	42,238	56,266
% Change		8.0%	21.0%	5.7%	7.2%
Annual %		0.8%	2.1%	1.9%	1.0%
<b>Housing Units</b>	270,997	308,858	368,631	382,831	413,631
Change		37,861	59,773	14,200	30,800
<b>Avg HH Size</b>	2.08	1.97	2.00	2.04	2.02
<b>K-12 Public</b>	46,630	46,794	52,383	49,230	46,327
<b>K-12 Per House (Public)</b>	0.172	0.152	0.142	0.129	0.112

*If the number of students per house drops like it did between 2000 and 2010, the last time births were flat or declining, the District would have about 11 students per 100 homes in 2030.*

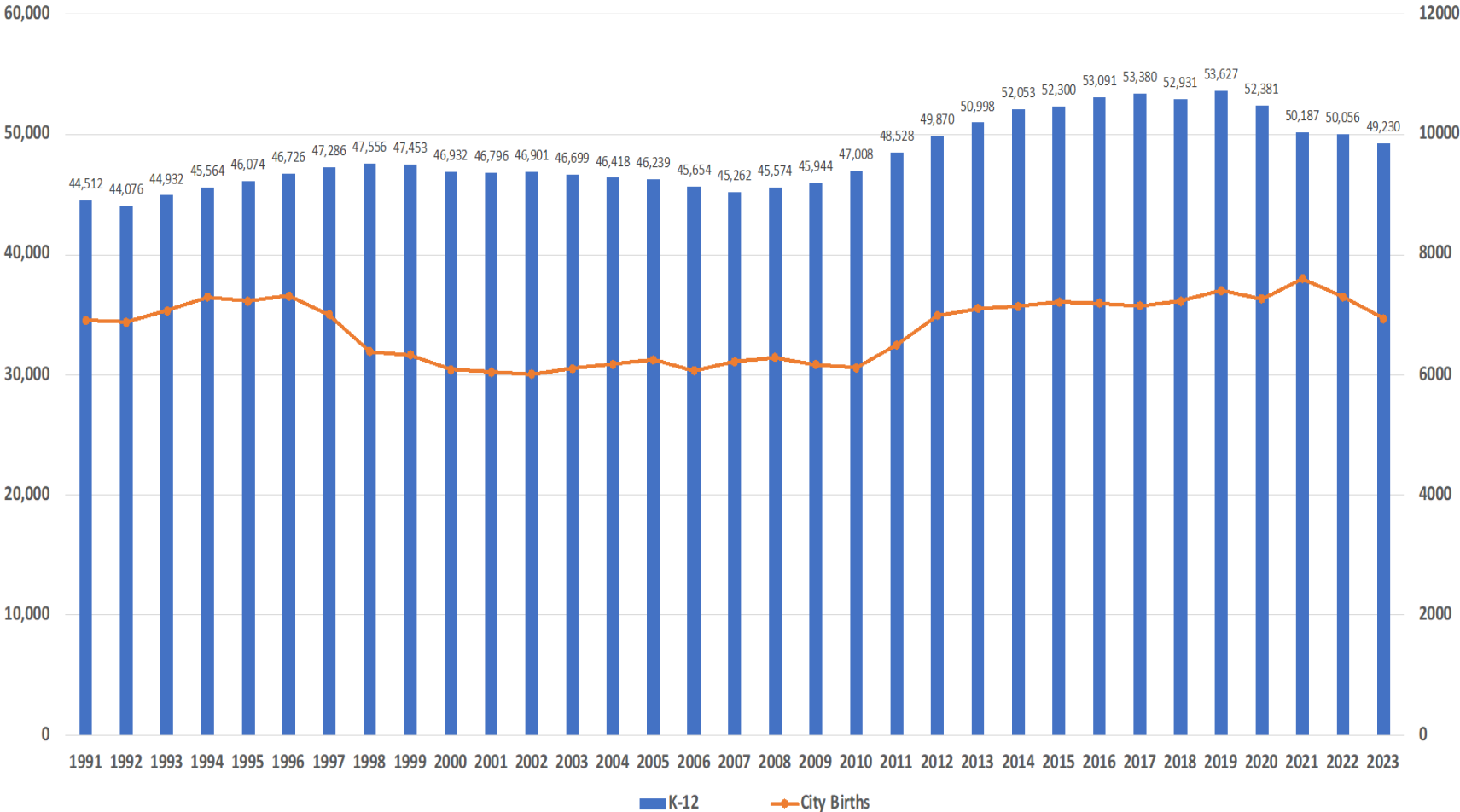


# Demographic Predictors of Enrollment

- Population growth
  - Not a great predictor
  - Many empty nesters and young singles in the City
  - If the annual growth rate hits three percent you might see some effect on enrollment.
- Housing
  - Total amount of housing is poor predictor of enrollment
  - Affordable housing – especially apartments with two-plus bedrooms are more highly correlated with enrollment.
  - Growth in some areas is offset by decline in others. Overall enrollment may not be affected by affordable housing development.
- Births
  - Best predictor of enrollment because of grade level trends; net losses at most grades as kids roll up.
- Migration
  - In and Out movement at the continuing grades also affects enrollment.

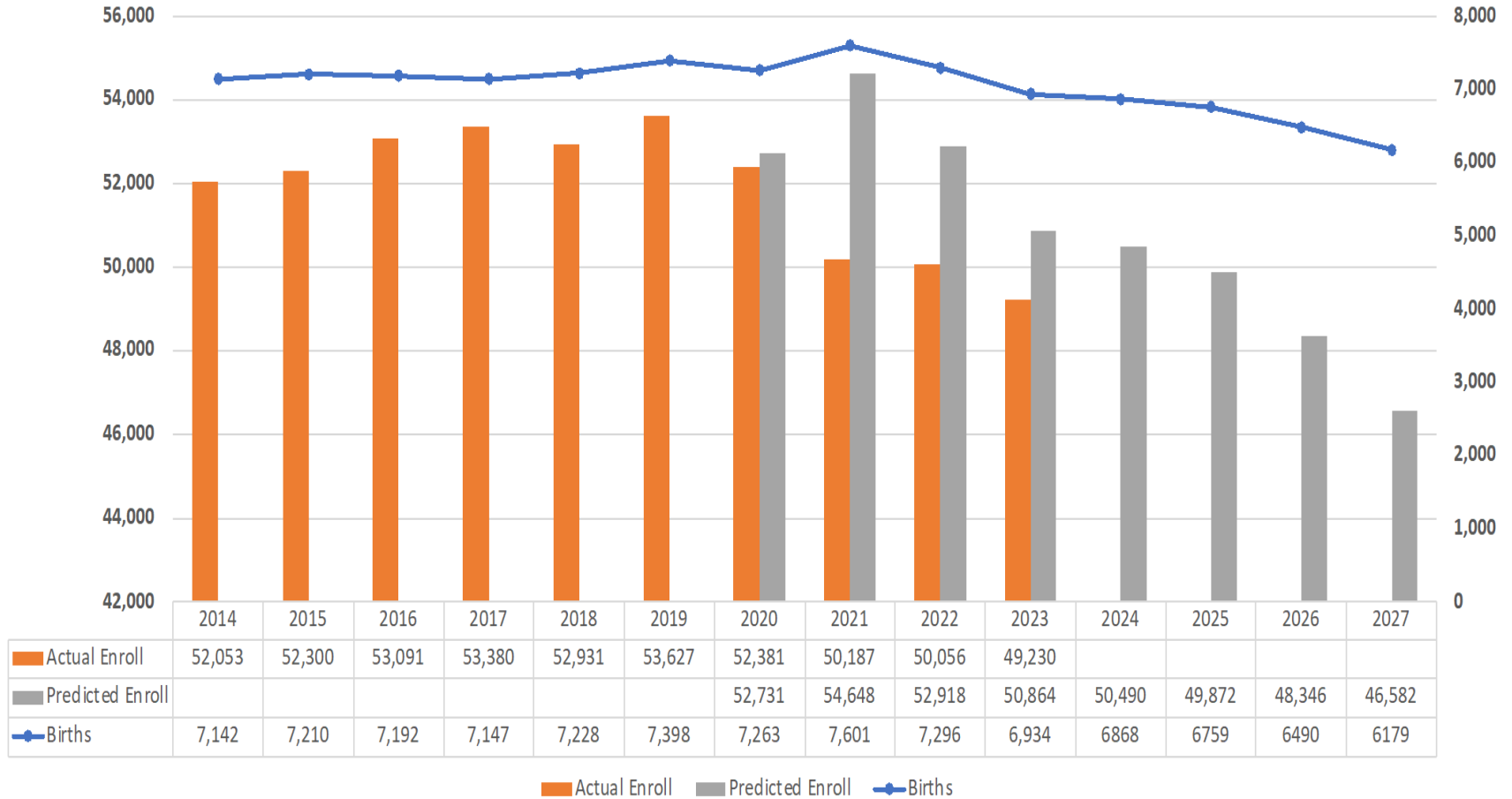
# Births and Enrollment

K-12 October Enrollment and Seattle Births  
Births are Five Years Prior to Each Enrollment Year

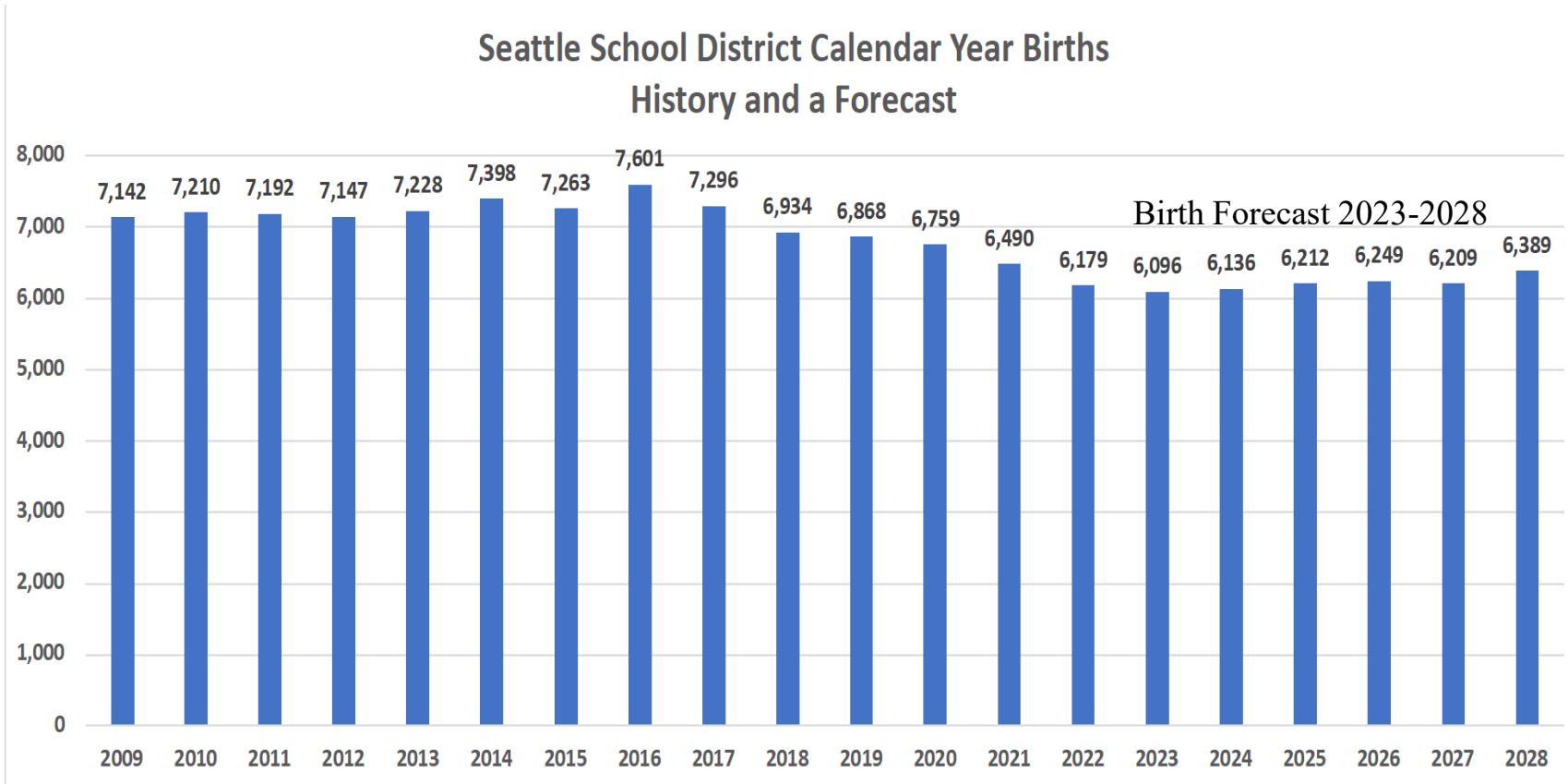


# Predicted Births and Enrollment

Predicting Enrollment Without COVID Using Births  
Actual versus Predicted

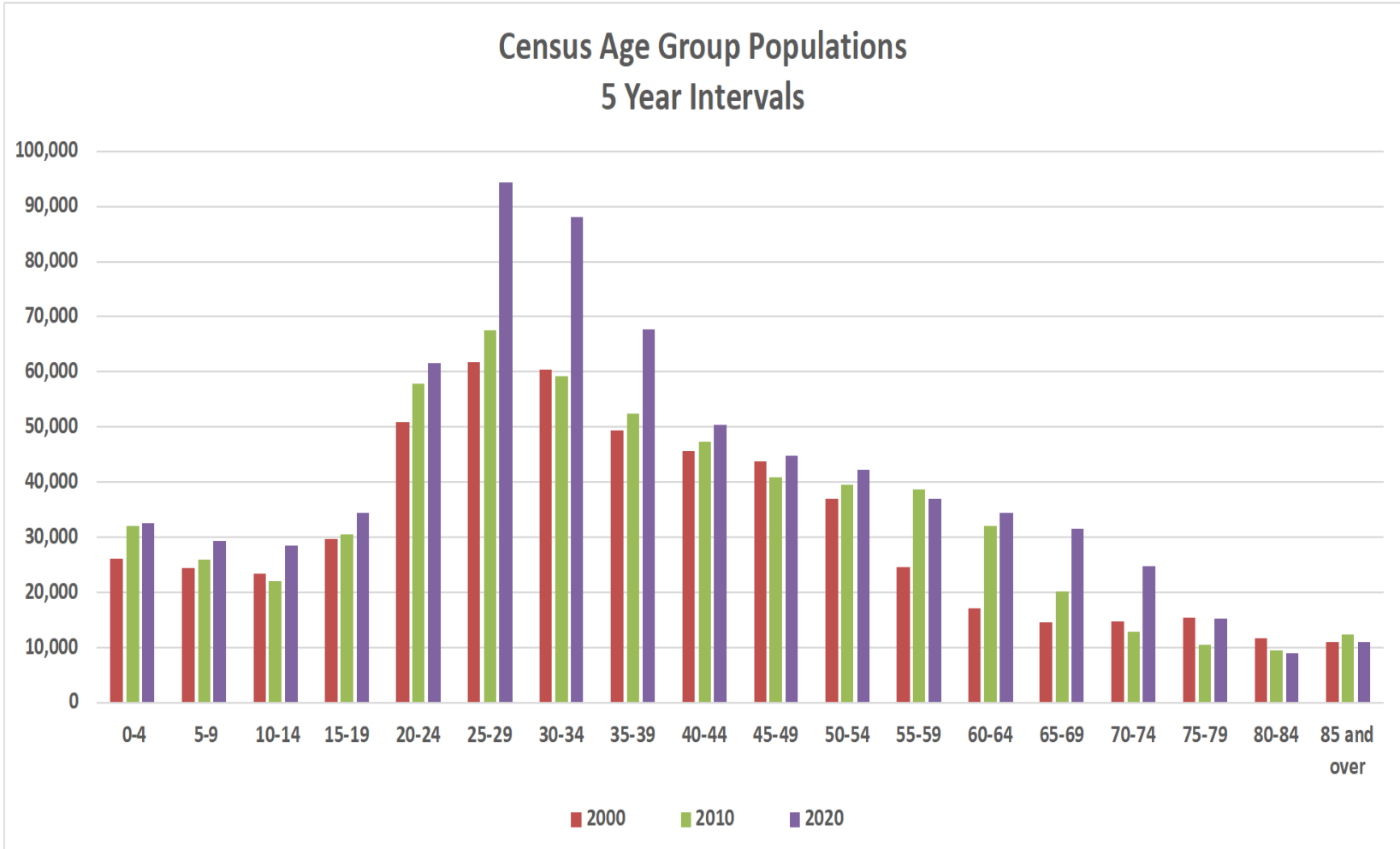


# Seattle School District Births Calendar Year

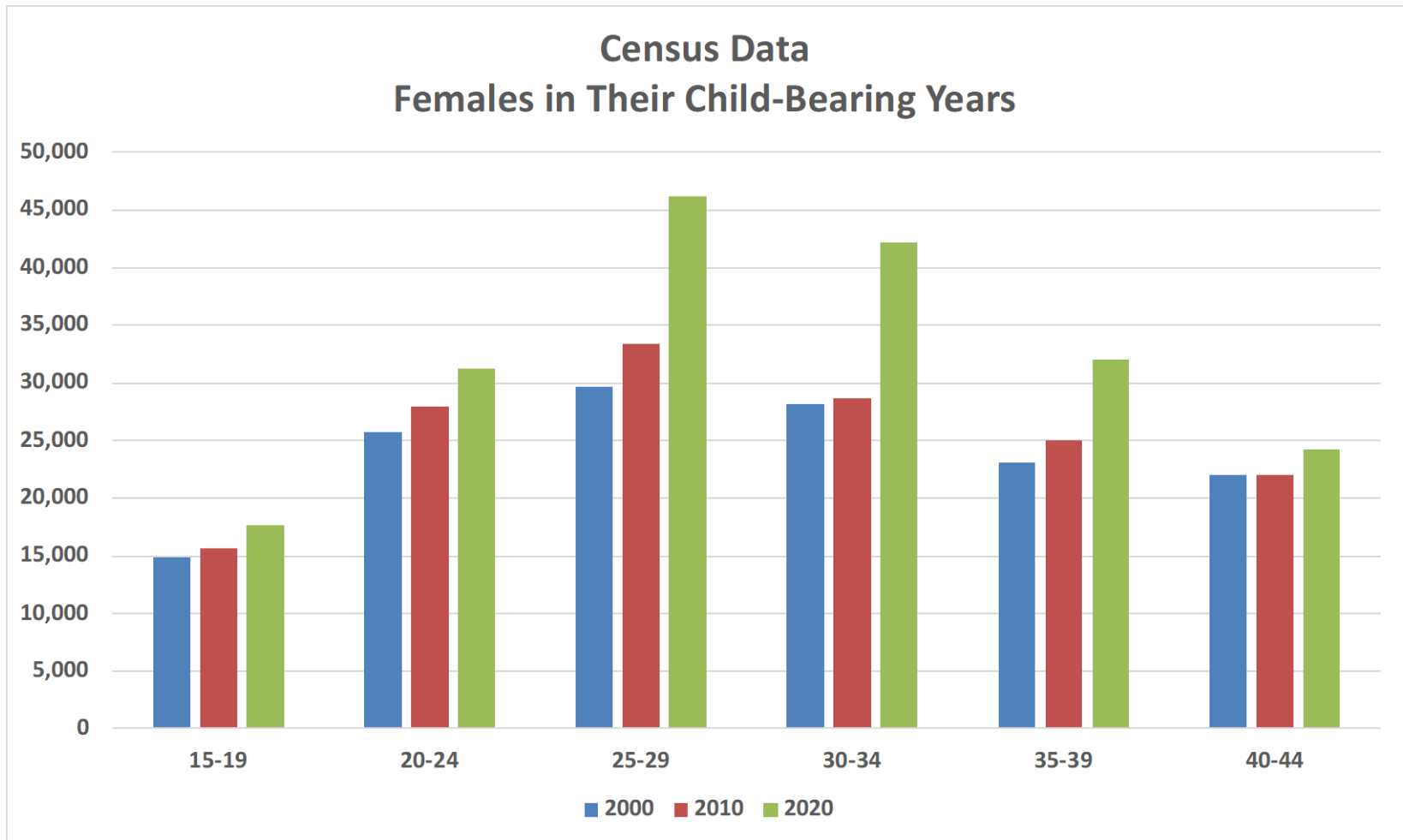


Comment: Based on the 2020 Census Data we would expect births to be higher, but so far they are trending low.

# Seattle School District Age Group Census Data



# Seattle School District Child-Bearing Females Census Data



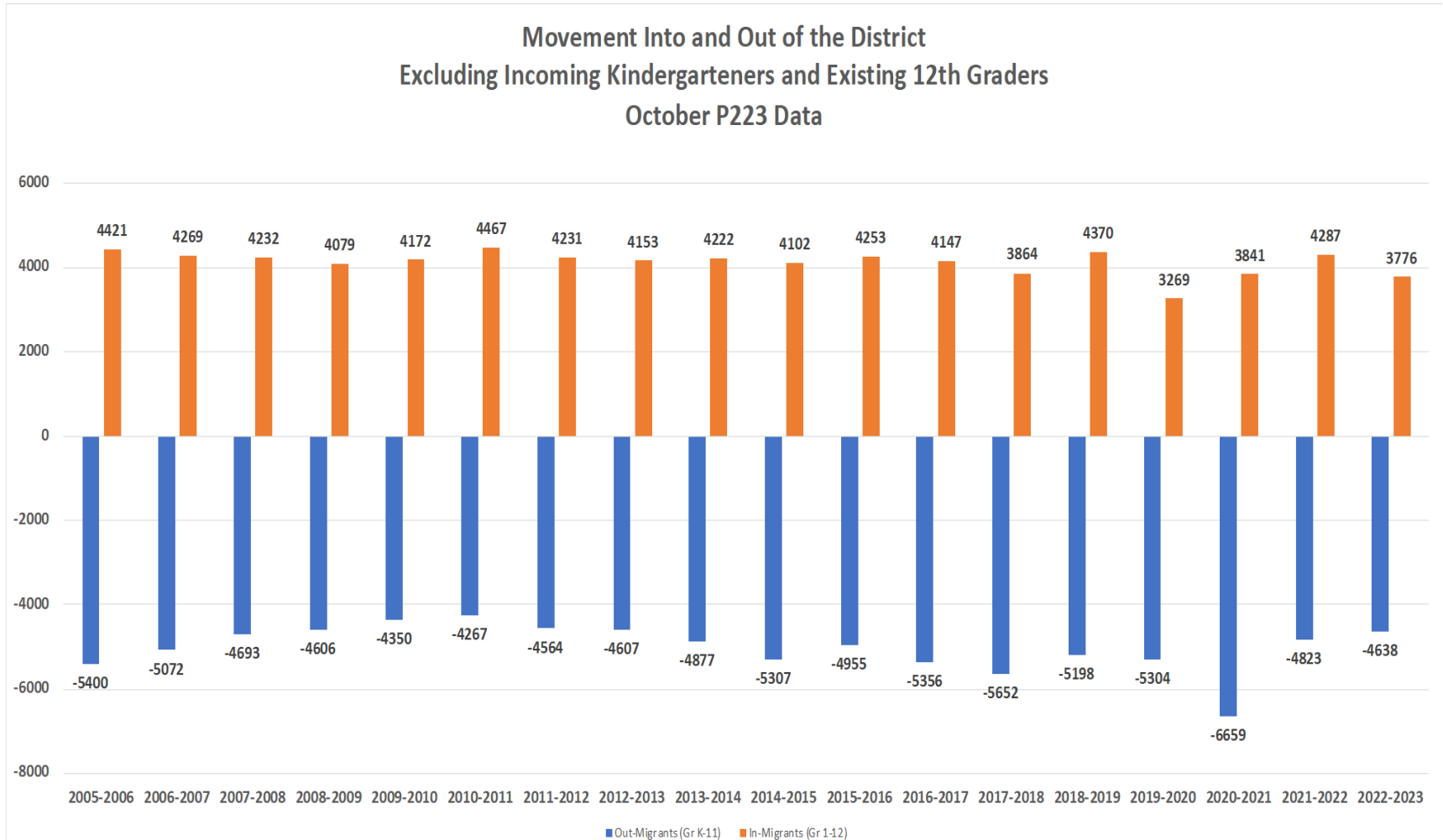
# Grade Progression Rates

## Grade Progression (Cohort Rates)

	Rates Used								
	Last Four Years			Cohort Averages			Average	Low-Out-Migration	Average Out-Migration
	2020	2021	2022	2023	2014-2019	2017-2019	2022-2023	2024-2027	2028-2033
Birth-to-K	0.543	0.522	0.538	0.536	0.653	0.641	0.537	0.540	0.573
K-1	0.959	0.958	1.019	0.997	0.998	0.998	1.008	1.003	1.001
1-2	0.949	0.918	0.995	0.992	0.978	0.975	0.993	0.993	0.985
2-3	0.942	0.913	0.980	0.984	0.977	0.979	0.982	0.983	0.979
3-4	0.954	0.940	0.998	0.990	0.983	0.985	0.994	0.992	0.987
4-5	0.951	0.934	0.987	0.985	0.978	0.972	0.986	0.986	0.975
5-6	0.894	0.858	0.898	0.907	0.910	0.900	0.902	0.905	0.904
6-7	0.976	0.944	0.999	0.978	0.990	0.990	0.989	0.990	0.990
7-8	0.989	0.953	0.996	0.996	0.990	0.989	0.996	0.996	0.990
8-9	1.000	0.977	1.012	0.998	1.003	0.994	1.005	1.002	1.001
9-10	1.019	0.985	1.013	1.015	1.001	1.017	1.014	1.015	1.012
10-11	0.952	0.959	0.986	0.966	0.953	0.956	0.976	0.971	0.966
11-12	1.038	1.076	1.046	1.030	1.050	1.048	1.038	1.038	1.038

# Migration

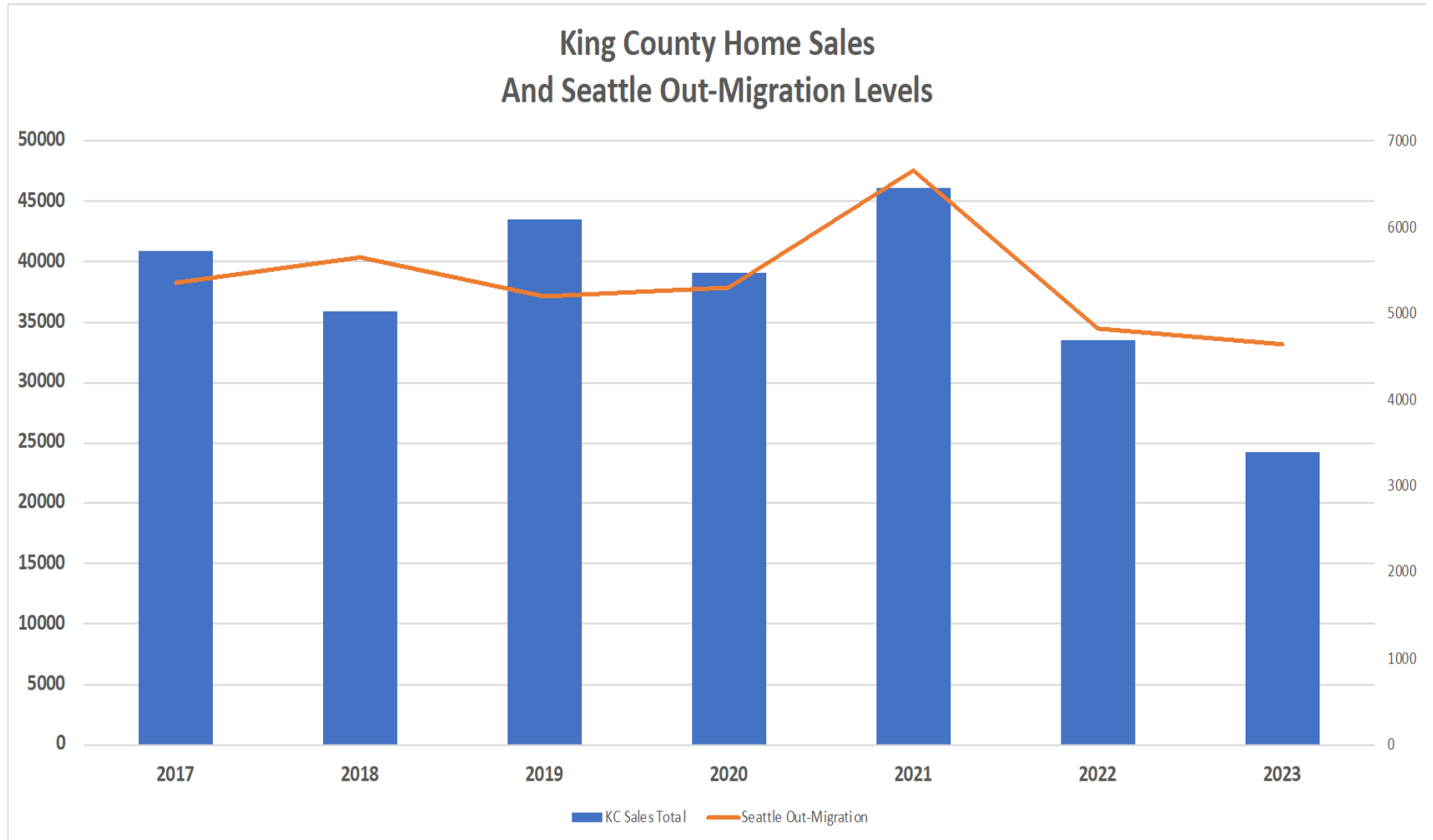
## Movement into and out of the District (Excluding Kindergarten and 12<sup>th</sup> Grade)





# King County Home Sales and Out-Migration in the District

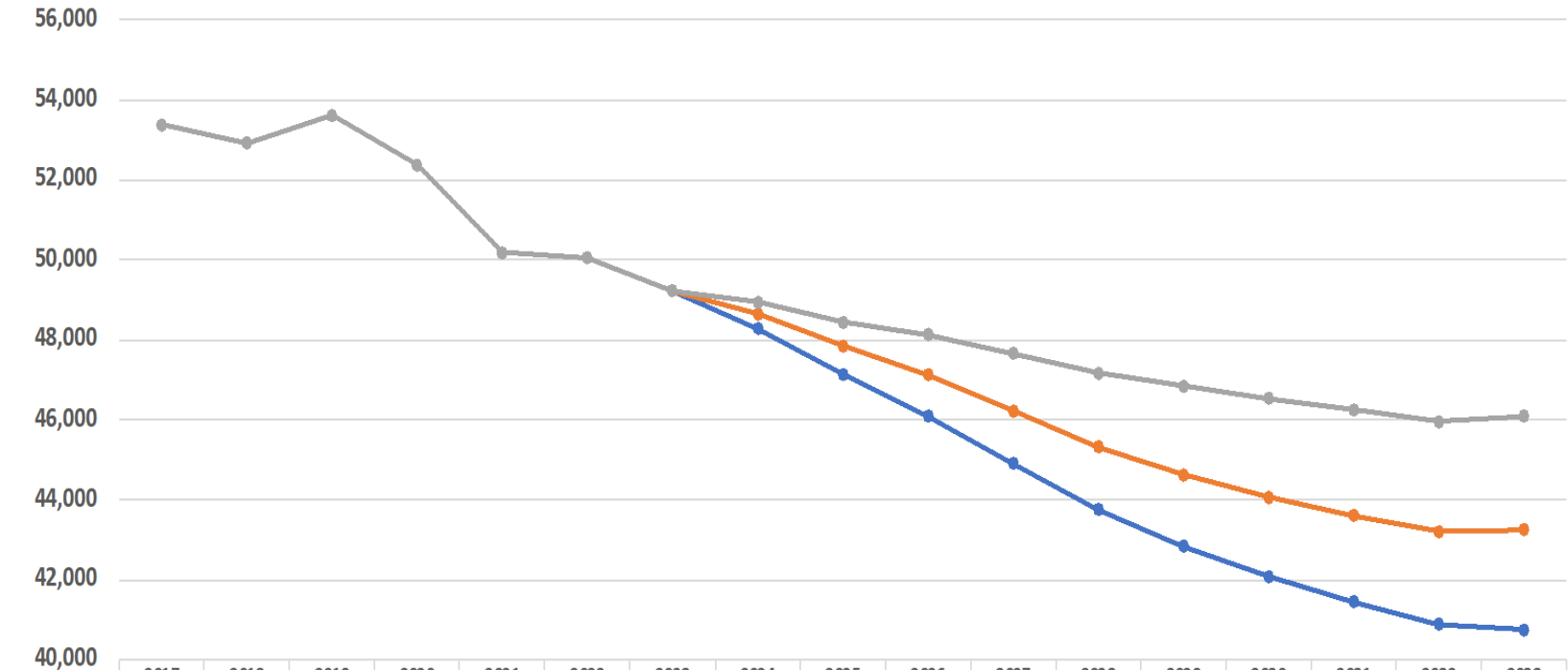
Food for Thought?



# Forecasts

## Low, Medium, High

Low, Medium, and High Forecasts  
Excludes Full-Time Running Start



	2017	2018	2019	2020	2021	2022	2023	2024	2025	2026	2027	2028	2029	2030	2031	2032	2033
Low	53,380	52,931	53,627	52,381	50,187	50,056	49,230	48,281	47,137	46,096	44,910	43,758	42,834	42,085	41,440	40,882	40,755
Medium	53,380	52,931	53,627	52,381	50,187	50,056	49,230	48,654	47,856	47,129	46,223	45,320	44,623	44,072	43,607	43,209	43,244
High	53,380	52,931	53,627	52,381	50,187	50,056	49,230	48,951	48,445	48,137	47,659	47,169	46,843	46,540	46,252	45,951	46,089

# Key Indicators and Questions

## Things to Watch

- **Births in Seattle**
  - Births should be higher but they continue to trend lower
  - Have young people moved out?
  - Have they stopped having kids and starting families?
- **Birth-to-K Ratios**
  - Will market share go up or stay the same? Is this the new normal post-covid?
- **Real Estate Market**
  - Is there a price correction in the future?; if so, this could benefit Seattle, similar to what happened after the 2007 crash of home prices.
  - Not as likely this time; developers in the outlying suburbs have been more careful about overbuilding since the bubble burst in 2007.
- **Migration**
  - Anything that slows out-migration tends to help enrollment.

## **Consultant Background and Experience**

Dr. Kendrick was the demographer for the Seattle Public schools from 1990 to 1997. In that capacity he provided enrollment projections to facilitate staffing and facilities planning and helped with the management of the student assignment system. He also provided analysis of the relationship between demographics and test scores.

Since 1997 he has worked as a consultant providing demographic analysis and enrollment projections for local school districts. Over the past 25 years his clients have included the following Districts: Auburn, Bainbridge Island, Bellingham, Bellevue, Bethel, Bremerton, Central Kitsap, Edmonds, Enumclaw, Federal Way, Marysville, Mercer Island, Monroe, North Kitsap, Olympia, Renton, Seattle, South Kitsap, Shoreline, Snoqualmie Valley, Sumner, Tahoma, and Tukwila. He also does annual enrollment projection work for the Everett, Highline, Mukilteo, Northshore, and Tacoma School Districts. He has worked in all four counties of the Puget Sound and is familiar with the different trends and patterns across the region.

