



# Lincoln High School Practice Field

## A Community Investment



# Our Team

## Seattle Public Schools Team

### Project Proponent

- Seattle Public Schools
  - Capital Projects & Planning Dept
  - Lincoln High School Community
  - SPS Athletics Depts

## Design Team

- SOJ - Project Manager
  - Paige McGehee, Project Manager
  - [paigem@sojsea.com](mailto:paigem@sojsea.com)
- McGranahan Architects
- DA Hogan Field Design

# Our Commitment to Community

## Evaluation and Community Engagement

- After a thorough assessment, we are **seeking community input on Wallingford Playfield** for the new Lincoln High School Practice Field. Alternative locations are under consideration including —Meridian Park, Queen Anne Bowl, and others.
- It's important for our communities to be heard—that's why we're looking for input and feedback.
- Please refer to provided **Frequently Asked Questions** document.
- **Comments Cards** provided for additional questions.

# A New Athletics Practice Home Field

## A Home Field for Students

- The new Lincoln High School Practice Field would provide an athletics practice “home field” for students, giving them a **state-of-the-art, full-size turf field**.

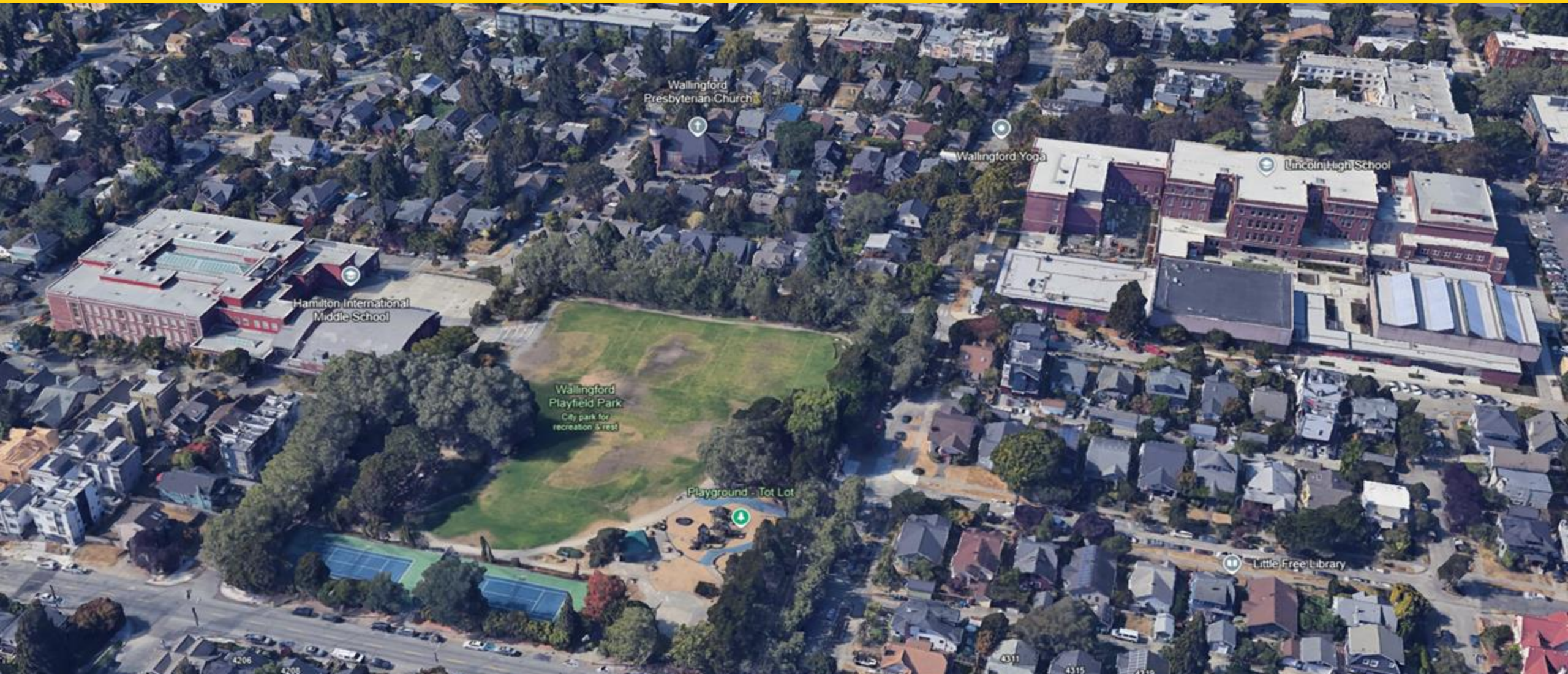
**Lincoln High School is the only SPS high school without these athletic amenities, and neighboring Hamilton is the only middle school without an athletic field.**

## Field Will Feature:

- Synthetic field for football & soccer
- Restrooms
- Storage for Equipment
- Precise LED lighting

**The field will provide a safe and accessible athletics space for students.**

# Wallingford Playfield



# Field Options & Recommendations

## Wallingford Playfield

- Proximity to Lincoln High School and Hamilton International Middle School.
- Benefits to Hamilton students (currently no turf field).
- Accessibility for nearly 3,000 students.
- Community benefits: youth sports clubs and broader Wallingford community use.

## Lower Woodland #7 Track

- None of the evaluated locations can accommodate both a field and track.
- We are proposing upgrading the existing track at Lower Woodland #7, also an SPR property.

### Meets Some Criteria

- Meridian Park
- Lower Woodland #7 Field
- Lower Woodland #2
- Queen Anne Bowl
- Big Howe

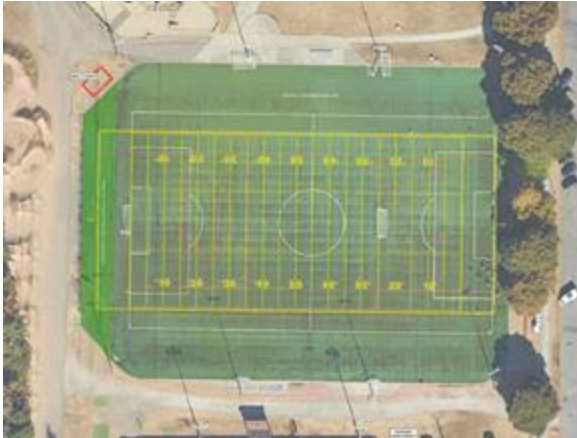
### Does Not Meet Criteria

- Interbay Playfield
- Montlake Playfield
- Robert Eagle Staff Middle School
- University Playfield
- B.F. Day Elementary School

# Alternatives

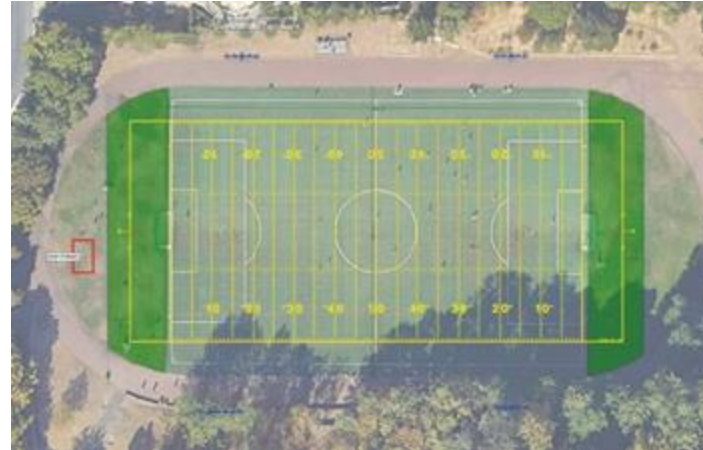
## Lower Woodland Soccer Field #2 & #7

- Already booked to capacity
- Upgrades needed to meet program needs



## Queen Anne Bowl

- Requires bussing
- Upgrades needed to meet program needs



## University Playfield

- Requires bussing
- Program needs can't be met within the site area



## Meridian Park

- Landmarked site / Orchard
- Displacement of character & current use



## Big Howe

- Requires bussing
- Displacement of current use



## B.F. Day Elementary School

- Requires bussing
- Program needs can't be met within the site area



# Wallingford Playfield: Potential Field Layouts





# Lower Woodland Field #7: Track Only



# Next Steps: Community Engagement

## Siting Review

- 1<sup>st</sup> Meeting Sept. '24
- **2<sup>nd</sup> Meeting Oct '24**

## Design

- Schematic Design
  - 3<sup>rd</sup> Meeting Dec '24
- Design Development
  - 4<sup>th</sup> Meeting March '25

## Bidding & Construction

**April '25 – Aug '25**

Questions?





## Contact:

Paige McGehee,  
Project Manager

[paigem@sojsea.com](mailto:paigem@sojsea.com)



# Thank you!

